

This app runs exclusively with Deliberator Windows[®] software. It has no functionality without a network connection to the Deliberator computer. See [Connect](#) below.

Deliberator Remote

V 1.0

for
Deliberator[®]
Application
V 1.59
(or higher)



support@dsan.com

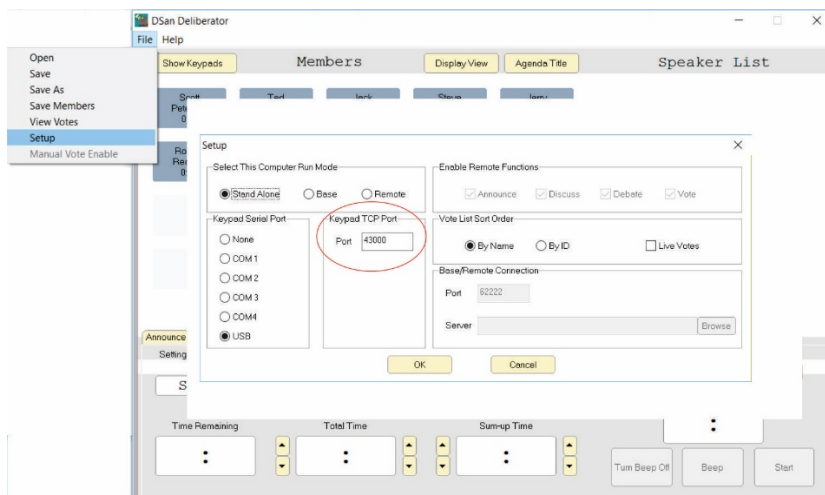
©2016
DSan Corporation

Deliberator is an electronic meeting manager for city councils, community boards and small legislatures. It enables members to self-regulate speaking order, control discussion times and register votes in an open and precise manner.

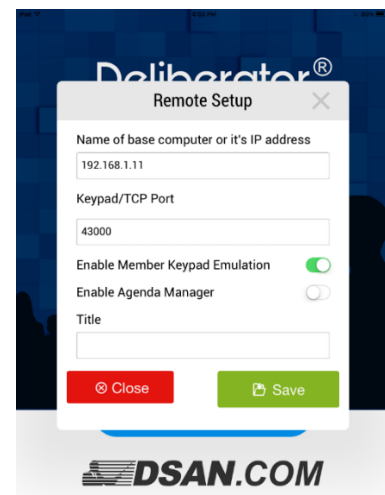
Deliberator Remote is the meeting's mobile dashboard. The app displays the status of each member and presents graphic controls for accessing the essential functions to manage the meeting.

Connect to Deliberator

Base Computer - Deliberator Application (File | Setup)



Remote Settings Page



Name of base computer or IP address

The main application is the server and Deliberator Remote is the client. The address of the base computer is its IP address. See www.dsan.com/Deliberator/Remote for instructions on how to find the address on your machine.

Keypad/TCP Port

Choose a high number (< 65000) so there is a less likely chance that you will conflict with a port number of another device on your network.

Enable Member Keypad Emulation

Normally, requests to speak and voting inputs are made by members themselves on individual keypads. Set to **Enable** if there are no member keypads available.





Enable Agenda Manager

A feature of Deliberator Remote under development. Enter a title of the meeting, the name of your legislature or a reference to an agenda item. This will be sent to the main application and which incorporates it into the record of a vote. If no title is input, the current date is displayed at the top of the screen.

Save

Touch **Save** to make the connection to the base computer. The mode of Deliberator Remote — Discuss, Debate or Vote — will match the mode of the base application and members (if any) who are on a speaker's list will be displayed.

Touch   to display more or fewer member names at one time. Maximum is 20 members. **Swipe Up** to view additional members.

View first 7 Speakers

Deliberator®

Discuss

Debate

Vote

October 14, 2016

Members - 10

Speakers - 10

George Washington	9:49
John Adams	10:00
James Monroe	10:00
John Tyler	10:00
James Madison	10:00
Thomas Jefferson	10:00
John Quincy Adams	10:00

Reset

Next

Start

4:34 PM
Current

1:39:49
Remain

6:13 PM
End

View first 13 Speakers

Deliberator®

Discuss

Debate

Vote

October 14, 2016

Members - 20

Speakers - 13

George Washington	9:49
John Adams	10:00
James Monroe	10:00
John Tyler	10:00
James Madison	10:00
Thomas Jefferson	10:00
John Quincy Adams	10:00
Andrew Jackson	10:00
Martin van Buren	10:00
William Henry Harrison	10:00
John Tyler	10:00
James K. Polk	10:00
Millard Fillmore	10:00

Reset

Next

Start

4:37 PM
Current

2:09:49
Remain

6:47 PM
End

View all Speakers

Deliberator®

Discuss

Debate

Vote

October 14, 2016

Members - 20

Speakers - 20

George Washington	9:49	John Adams	10:00
James Monroe	10:00	John Tyler	10:00
James Madison	10:00	Thomas Jefferson	10:00
John Quincy Adams	10:00	Andrew Jackson	10:00
Martin van Buren	10:00	William Henry Harrison	10:00
John Tyler	10:00	James K. Polk	10:00
Millard Fillmore	10:00	Franklin Pierce	10:00
James Buchanan	10:00	Abraham Lincoln	10:00
Andrew Johnson	10:00	Ulysses S. Grant	10:00
Rutherford B. Hayes	10:00	Chester A. Arthur	10:00

Reset

Next

Stop

4:38 PM
Current

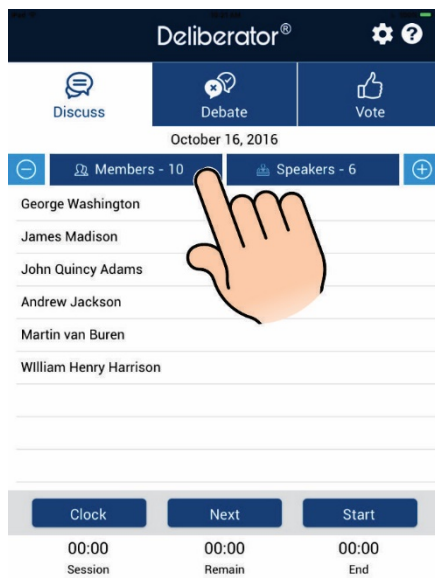
3:19:31
Remain

7:57 PM
End

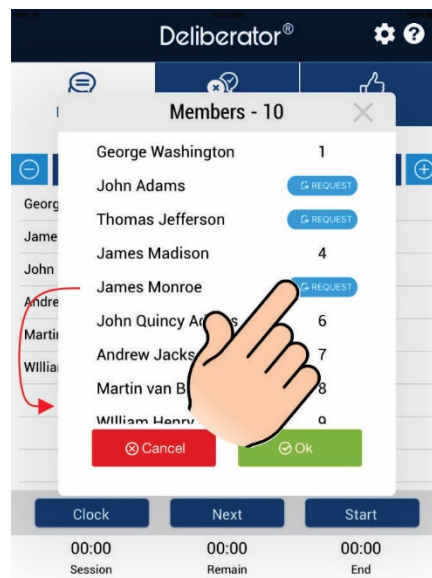
Discuss Mode

This is for **untimed** discussions. Members add themselves to the Speaker List by their keypads. If Member Keypad Emulation is enabled, touch **Members** to add a member to the Speaker List.

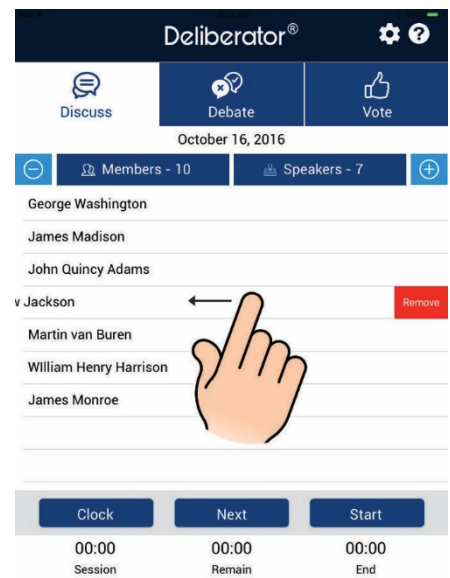
Touch Members to View All



Touch Request to Add Member



Swipe Left to Remove Member



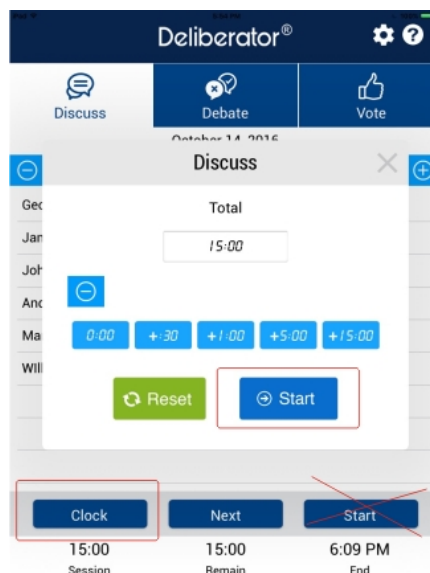
Start – Recognize the first speaker on the List. This turns on Talk LED of the member keypad.

Next – Remove the first speaker and advance others on the list.

Although members are not timed in the Discuss Mode, a count-down clock is available to monitor the length of a discussion.

Clock – Open the clock settings dialog. Add Total Time as desired using the increment buttons. Touch **Start** in the dialog box – not on the main Discuss Mode window to start the count-down clock.

At the bottom of the screen, time counts down (Remain) in Minutes : Seconds. The time-of-day at the end of the discussions is shown in Hours : Minutes.



Debate Mode

This is for timed discussions. Each member is assigned a Total Time and a Sum-Up Time from the main Deliberator application. The Remote shows the Speakers List in the order of Requests-to-Speak and the amount of Time Remaining for each speaker. The sum of the Time Remaining values is shown at the bottom in Hours:Minutes:Seconds as **Remain**. For convenience, the current time-of-day and the calculated end time are shown at the bottom.

Start – A green banner behind the first name indicates that this speaker is recognized and his clock is running. It will change to yellow and then red at 0:00 time remaining. **Stop** – The clock stops and the color banner disappears.

Next – Remove the first speaker on the list and move the others up one position.

Reset – Restore the Time Remaining of the first speaker to his assigned Total Time.

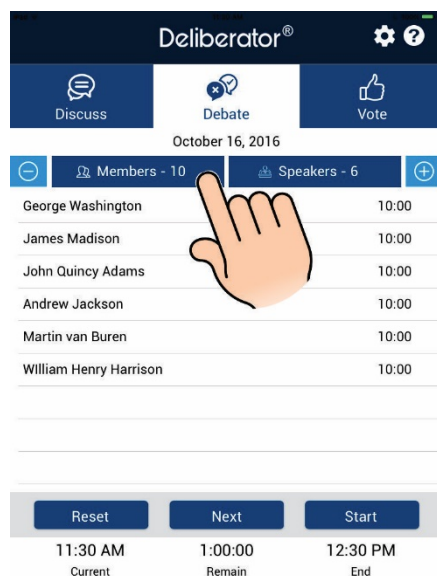
Swipe Up – View additional members on the Speaker List.

Touch **Members** to view all the members and to see who is and who is not on the Speaker List.

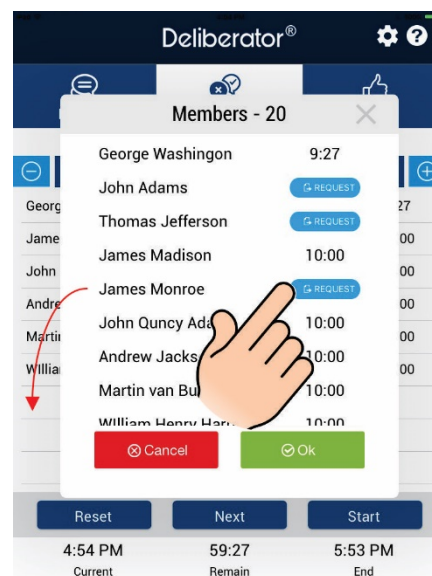
Request – If Member Keypad Emulation is enabled, add a member to the Speaker List.



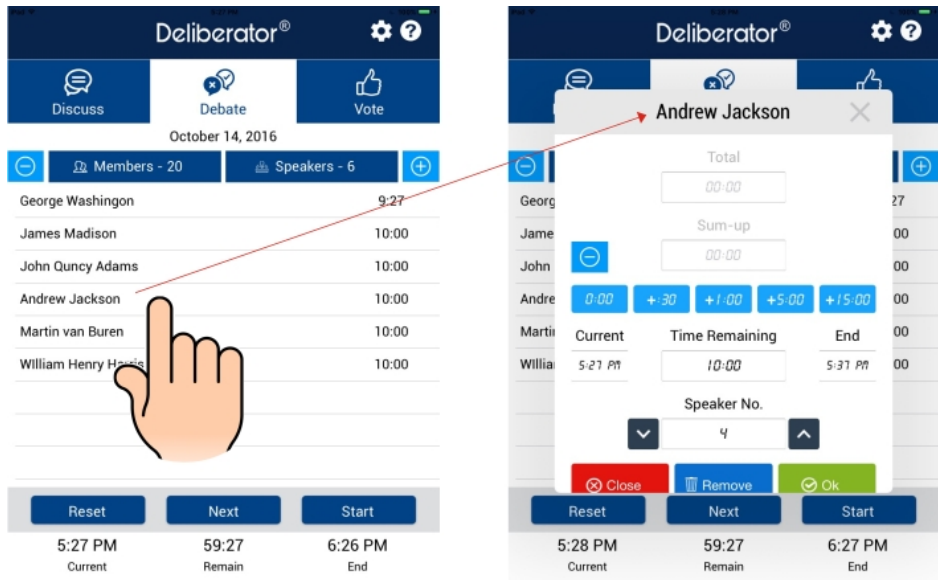
Touch Members to View All



Touch Request to Add Member



Touch any speaker name to adjust settings for this speaker. Allot more time or reduce time, move up or down the Speaker's List (future feature) or remove from the Speaker List.

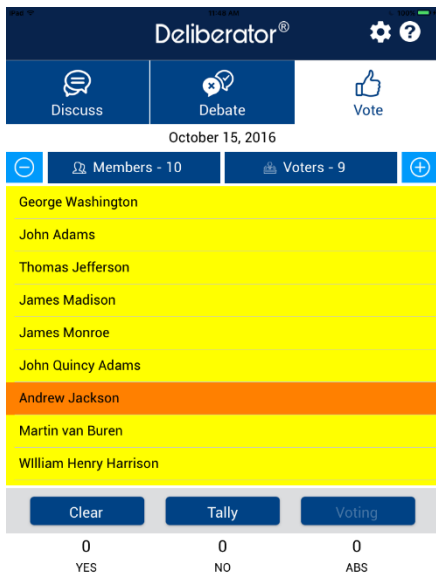


Vote Mode

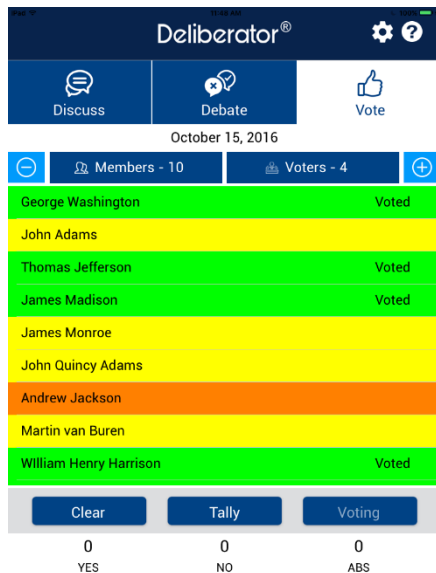
The names of all members of the legislature are shown when entering the vote mode.

Vote – Yellow indicates that member keypads are unlocked and Deliberator is ready to register votes. Green indicates that a vote is received. Orange indicates that this member does not have voting privileges or is only eligible to vote in case of tie.)

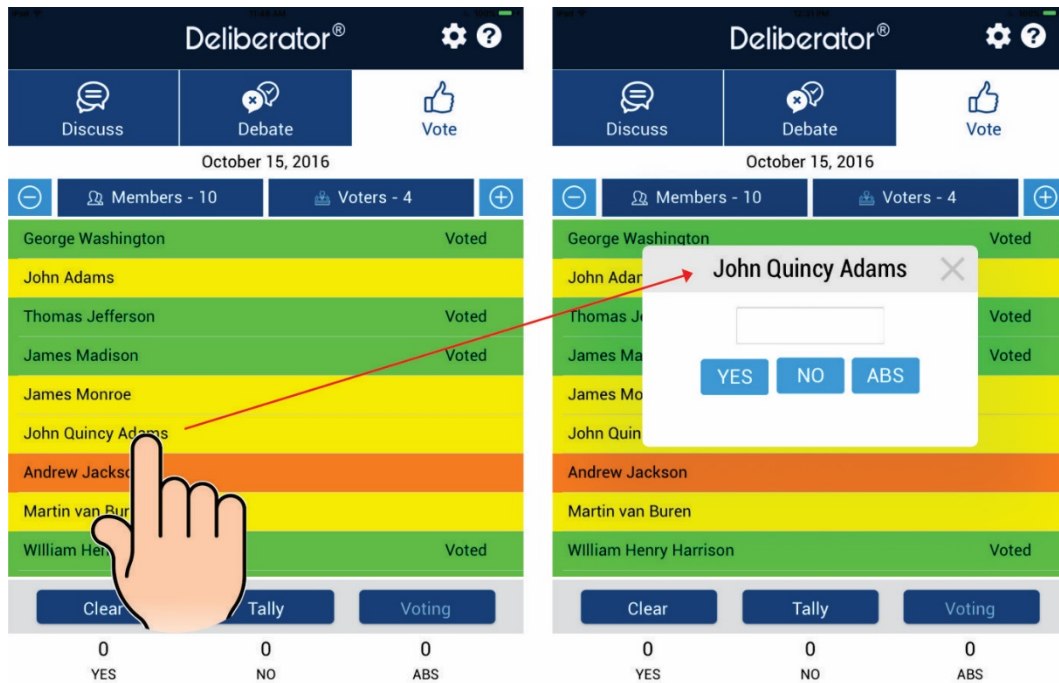
Touch Vote to Start Voting



Monitor Voting Progress



Enter votes on behalf of any member who does not have a keypad. Touch a member name to open the voting dialog box.



Tally – Member keypads are locked and voting is ended. Results are displayed at the bottom. If there is a tie, the keypad of the designated tie-breaker member is enabled and orange background changes to yellow.

Message Protocol

Communication between your iPad and the base Deliberator application is achieved using a plain-text ASCII protocol. This same protocol can be used to program popular touch panel systems such as those of Crestron and AMX.

Please contact DSAN (sales@dsan.com) to obtain a document that describes the API to program your device to communicate with Deliberator.