

Quick Start-Up Guide



DataConnect®

Version 0.54

Add-In for Displaying Data
from
DSan Devices
in
Microsoft PowerPoint®

with

MessageConnect™

Version 0.16

Application to send text messages to
DataConnect over network



DSan Corporation
Roslyn Heights, NY 11577

sales@dsan.com

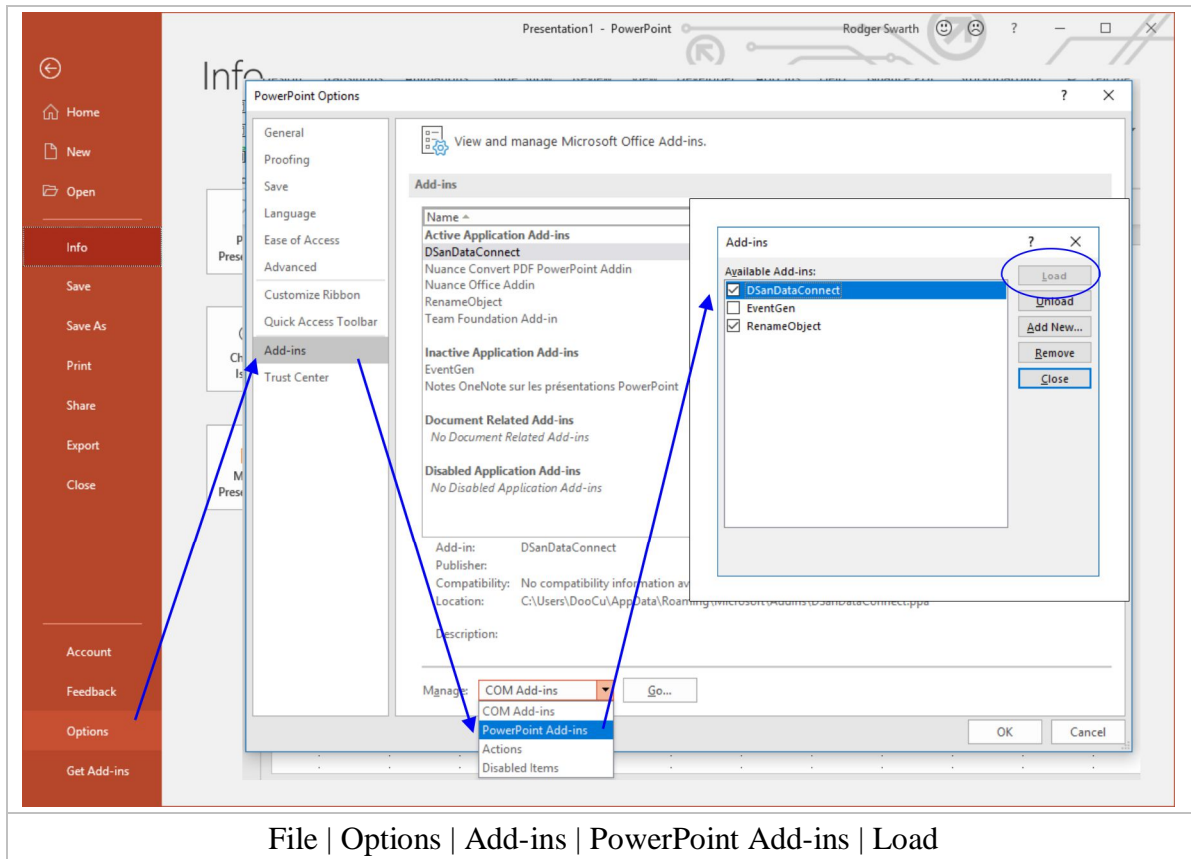
If you're computer savvy and are already familiar with DSan Corp's products, follow these steps to quickly set-up a PowerPoint® presentation to display data from The Deliberator®, Limitimer® or PerfectCue®.

Skip to Introduction if you want to understand how DataConnect works and how to customize the sample presentations or create your own DataConnect presentations. You may also find current information at www.dsan.com/DataConnect.

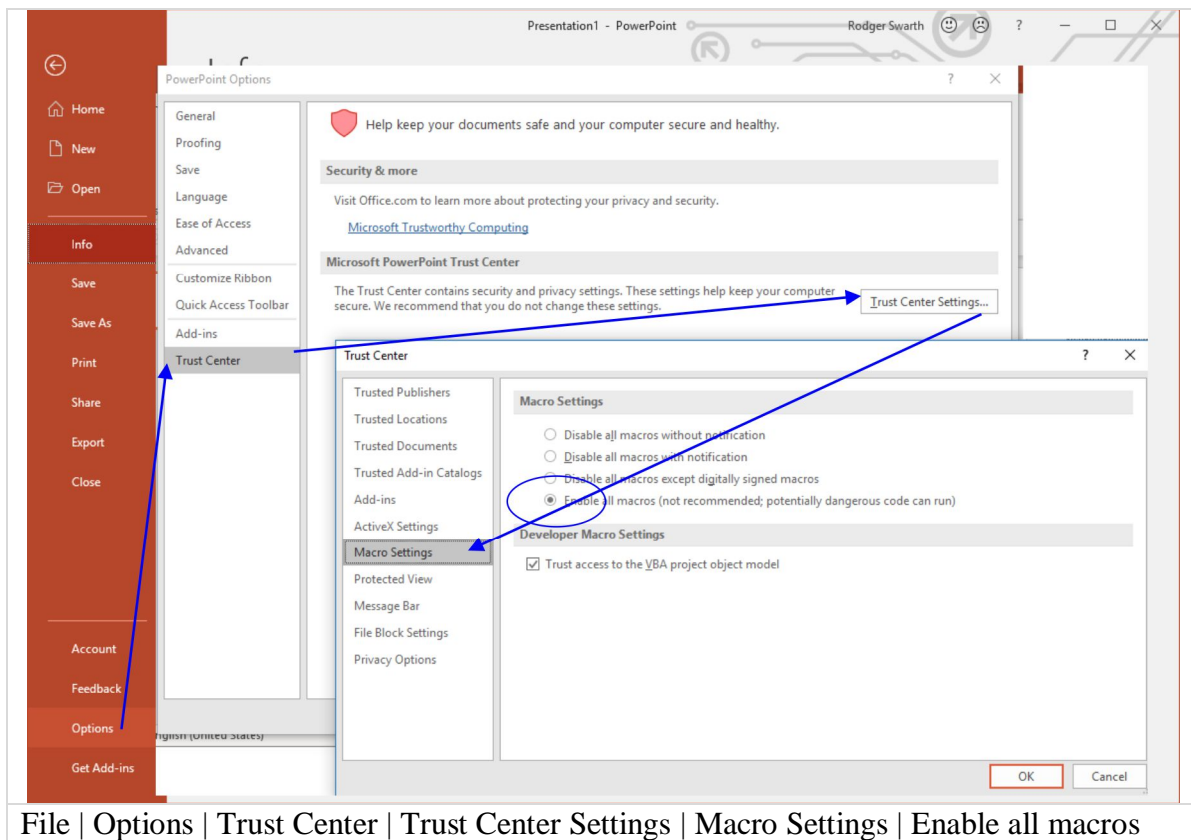
Assuming you have already run the DataConnect Setup program and you have read the hardware and software requirements and have the required administrative privileges for your computer...

Load the DataConnect Add-In into PowerPoint

In PowerPoint, click **File | Options**. In the PowerPoint Options dialog box, select Add-Ins. Select PowerPoint Add-in from the Select control at the bottom. In the Add-ins dialog box, click "Add-New." You should see DSanDataConnect.ppa in its default location (C:\Users\[Your User name]\AppData\Roaming\Microsoft\Addins). If you don't see the Addin there, you can always find it an Applicationfiles subdirectory of wherever you chose to install DataConnect (usually this is ProgramFiles (x86)\DSan-DataConnect).

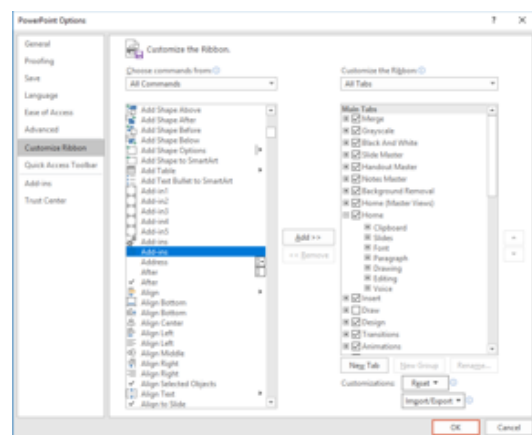


You may have to adjust your security settings to load this Add-in. See below.

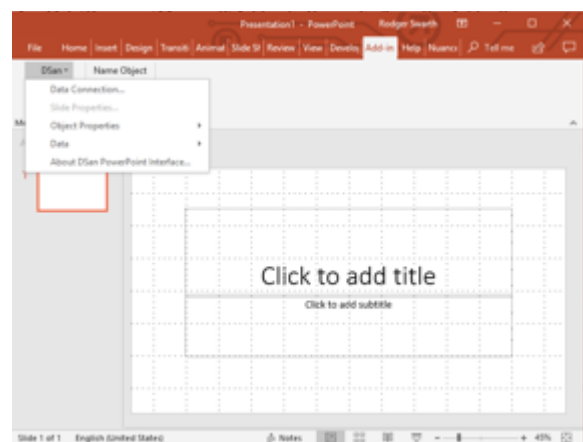


As soon as the DataConnect Add-in is successfully loaded, you will see the DSan menu item under Add-Ins in the Ribbon.

If you don't see the "Add-ins" item in the menu, right click. Find Add-ins in the left column and add it to the right.



Once loaded, the DataConnect menu is found when you click Add-ins from the main menu.

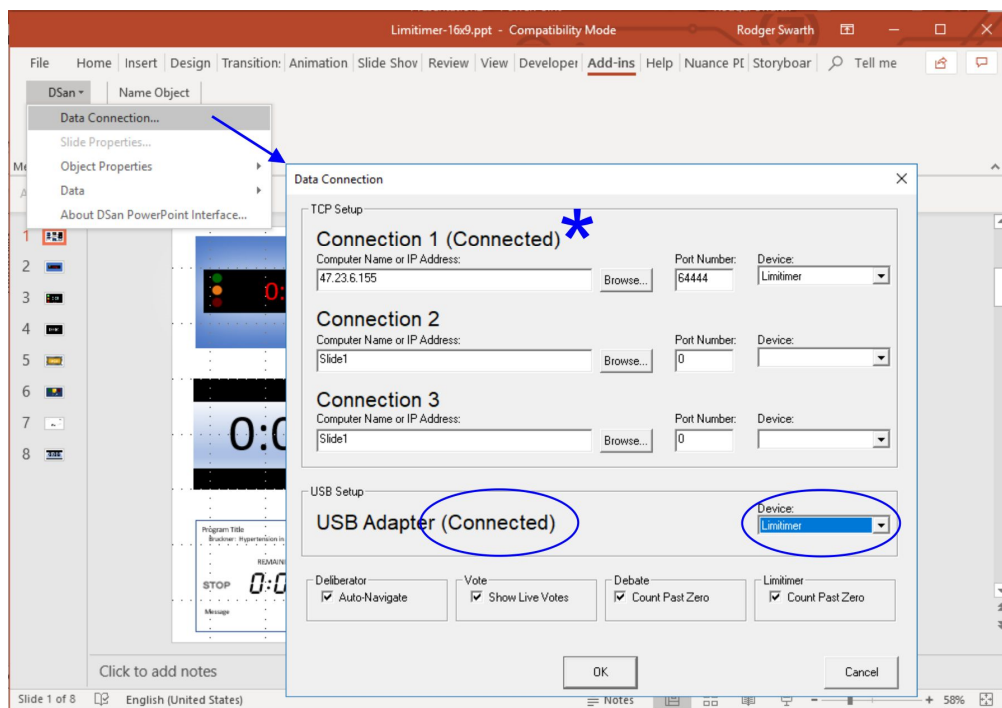


Connect the VC-2000 dongle to the computer

Use Model VC-2000LT Cat-5 — USB dongle to introduce Limitimer data into the computer that is running PowerPoint with the DataConnect add-in. (Note: This is the same dongle that you would use if you are using VideoClock software which is included with your purchase of DataConnect.)



Open one of the pre-configured PowerPoint presentations. (They are pre-configured to use the USB data source.) To verify, from the DSAN Add-in Menu, select DataConnect.



*Note: It is possible to use Limitimer data from a network source. However, you will need DSAN Network Extender (IP-2000X) to introduce Limitimer data onto a network.

Select one of the data source links below to see additional information about pre-configured PowerPoint presentations that are included with the DataConnect download.

[Deliberator®](#)

[Limitimer®](#)

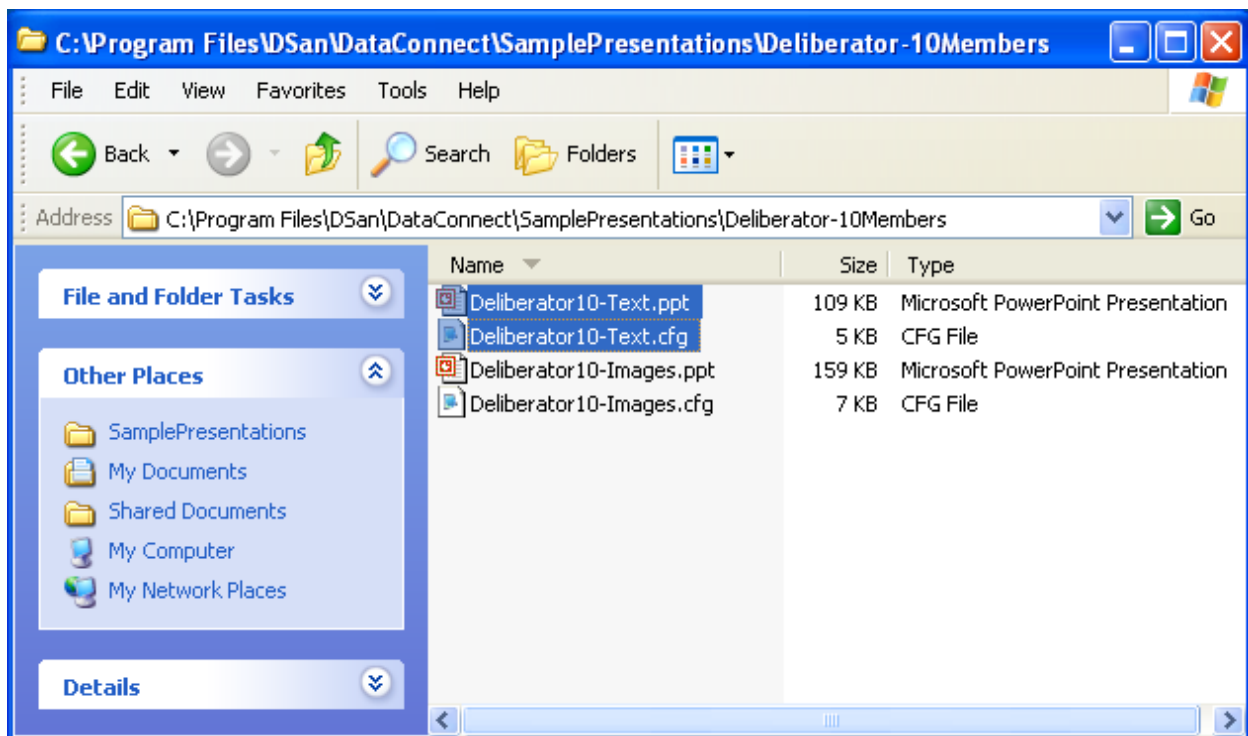
[PerfectCue®](#)

Sample Presentation – The Deliberator®

This illustration assumes that you are familiar with DSan's product, The Deliberator®, an electronic meeting manager, and that it is already loaded and running correctly on your computer.

Sample presentations for The Deliberator are found in directory Program Files \ DSan \ DataConnect \ Sample Presentations \ Deliberator-10Members or Deliberator-20Members. Select the presentations that match most closely the number of members of your legislature. There are two presentations in each directory: one uses images, the other is all text. For our illustration, select one of the text presentations. Alternatively, open one of the special PowerPoint presentations that DSan configured for your legislature,

Copy **both** (IMPORTANT!!!) the PowerPoint presentation **and** the corresponding configuration file into the main DataConnect directory. Always keep them together. You may copy them into any directory on your computer. If you do not have administrative privileges, be sure to copy them into the My Documents directory of the non-administrative user who will be operating the computer or into the Shared Documents directory. Always keep the PowerPoint and



Configuration file together.

Note: The sample Deliberator presentations that use images point to images that are located in the DataConnect \ DefaultImages directory. Unless you customize the presentations to point slide objects to your own images, you may place the PowerPoint and Configuration files anywhere and they will still find the images in the DefaultImages directory. This is made possible by a registry entry made during installation. That entry defines the installed path to the default images.


Each presentation contains four slides. Each slide is configured to display data from one of the Deliberator's four operating modes: Announce, Discuss, Debate and Vote. In these sample presentations, the correct slide will be displayed when you change modes in The Deliberator. However, you may disable this auto-navigation feature. See `DataConnection` later in this guide.

Announce	Slide 1
<p>The screenshot shows the "D-Span WebEditor" application. On the left, there's a sidebar with "Show Members" and "Display View". The main window has tabs for "Announce", "Discuss", "Debate", and "Vote". Under "Announce", it lists members and their avatars. A large text box contains the announcement for Ordinance 090411.</p>	<p>Announce</p> <h2>Agenda Item #8:</h2> <h3>Amend zoning ordinance</h3> <p>090411 An Ordinance to amend the Zoning Maps by adding certain requirements pursuant to the changing of zoning designations of certain areas of land located within an area bounded by Arch Street, 18th Street,</p>
<p>The screenshot shows the "D-Span WebEditor" application. On the left, there's a sidebar with "Show Members" and "Display View". The main window has tabs for "Announce", "Discuss", "Debate", and "Vote". Under "Discuss", it lists members and their avatars. A large text box contains the discussion settings.</p>	<p>Discuss</p> <h2>Speaker List</h2> <h3>Hector Rolandas</h3> <ul style="list-style-type: none"> Suzy Compton Tim Barth David Whitson Scott Turnage Tim Welch Oscar Trevino Ken Sapp John Lewis Benjamin Kochner

Debate

Slide 3

The screenshot shows the 'Debate' screen of 'The Deliberator' software. On the left, there is a grid of 12 member icons (6 rows by 2 columns). The top row of icons is green, and the bottom two rows are blue. To the right of the grid is a list of speakers: Hector Rolandas, Suzy Compton, Tim Barth, David Whitson, Scott Turnage, Tim Welch, Oscar Trevino, Ken Sapp, John Lewits, and Benjamin Kochner. Below the grid is a 'Select Member or All (left click)' button. On the right side, there is a 'Current Speaker' section with a green bar and a red bar, and buttons for 'Stop' and 'Start'.




Debate	
Speaker List	Time Remaining
Hector Rolandas	9:54
Suzy Compton	10:00
Tim Barth	10:00
David Whitson	10:00
Scott Turnage	10:00
Tim Welch	10:00
Oscar Trevino	10:00
Ken Sapp	10:00
John Lewits	10:00
Benjamin Kochner	10:00
Total Debate Time Remaining:	1:39:54

Vote

Slide 4

The screenshot shows the 'Vote' screen of 'The Deliberator' software. On the left, there is a grid of 12 member icons (6 rows by 2 columns). The top row of icons is green, and the bottom two rows are blue. To the right of the grid is a list of voting members: Oscar Trevino, Scott Turnage, Suzy Compton, David Whitson, Tim Barth, Ken Sapp, Tim Welch, John Lewits, Hector Rolandas, and Benjamin Kochner. Below the grid is a 'Tally' button. At the bottom, there is a 'Voting Control' section with buttons for 'Save', 'Vote', 'Yes', 'No', and 'Abs', and a display showing 'Yes 3', 'No 6', and 'Abs 1'.



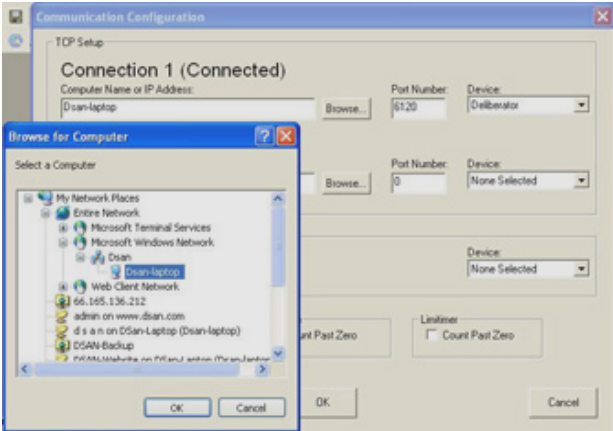
Vote		Tally
Oscar Trevino	No	Voted
Scott Turnage	No	Voted
Suzy Compton	No	Voted
David Whitson	No	Voted
Tim Barth	Yes	Voted
Ken Sapp	Yes	Voted
Tim Welch	No	Voted
John Lewits	No	Voted
Hector Rolandas	Yes	Voted
Benjamin Kochner	Abs	Voted
Tally	3 Yes, 6 No, 1 Abs	

Note: When you load the selected PowerPoint presentation, you may not see any names or other text on the slides. That's because you have not yet made the data connection to The Deliberator. If you wish to immediately see some text populate the slides, select [Add-In] | DSan | Data \ Disable. This places default values into the slide objects that have been configured to receive data from The Deliberator. Remember to restore that setting to live after you have made the data connection.

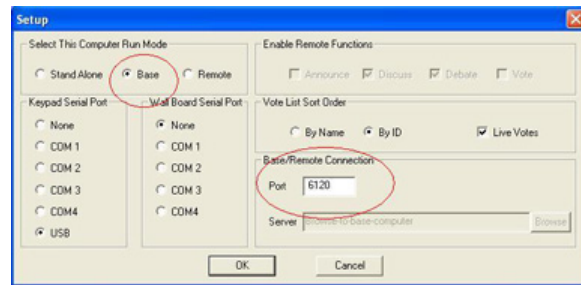
Make the data connection

From the PowerPoint menu, select [Add-In] | DSan | Data Connection. Browse for your own computer (if you are running the PowerPoint presentation on the same computer on which you are running The Deliberator). If the same computer, simply enter "." (a period) for the computer name. Alternatively, browse for the networked computer that is running The Deliberator or enter its IP address. Enter the port number you selected in the Deliberator | File | Setup dialogue box. The Deliberator must be running in the **Base** mode in order for its data to be exported to PowerPoint.

DataConnect Data Connect menu



The Deliberator: File | Setup menu



Note: It is also possible to run the PowerPoint presentation on a separate computer. See chapter Data Connection to learn more.

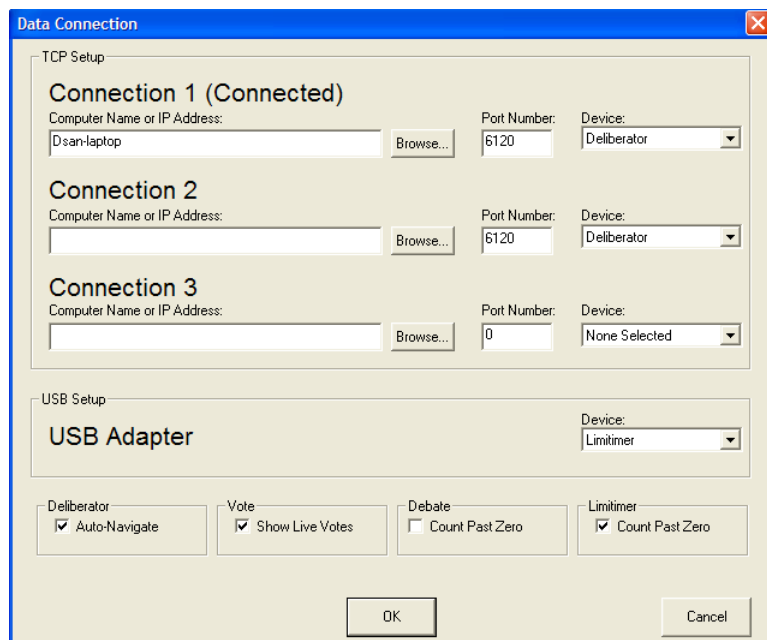
The moment you have made a successful data connection you should see names of your legislative members on the voting slide of the PowerPoint presentation. You will not see the votes until you have voted. However, you should see the list of voting members. (**Note:** If you do yet have Deliberator keypads, you may simulate voting by right-clicking the green name boxes on the Deliberator control screen. See the Deliberator Demo Instructions.) You will not see them on the debate slide unless they have made requests-to-speak and are on the speakers list.

If you disabled the data stream on the DataConnect Data dialogue box, remember to set it back to "Live" to view the data from The Deliberator.

Data Connection Options

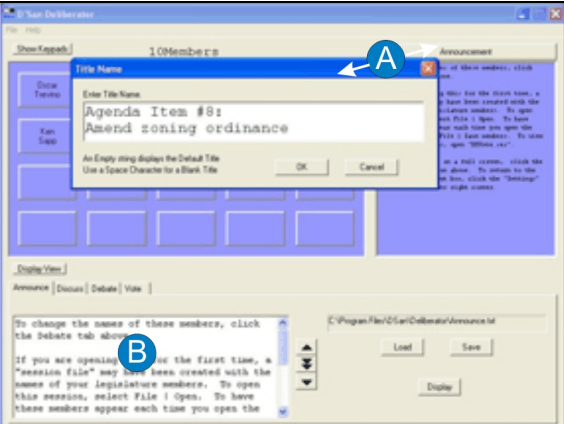
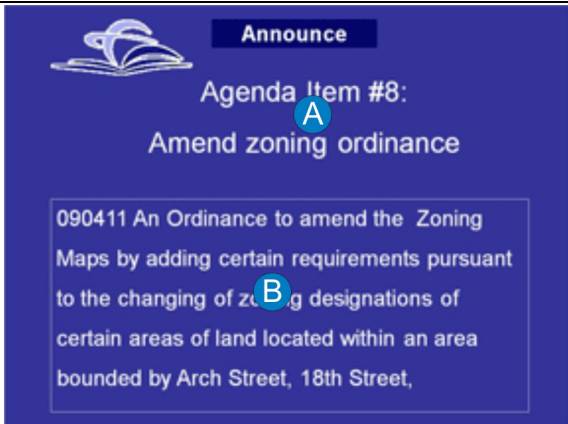
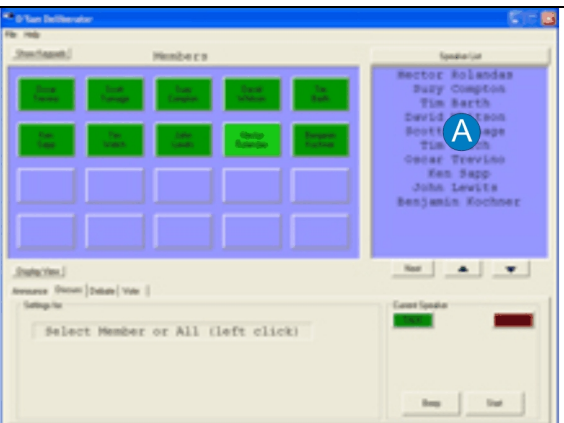

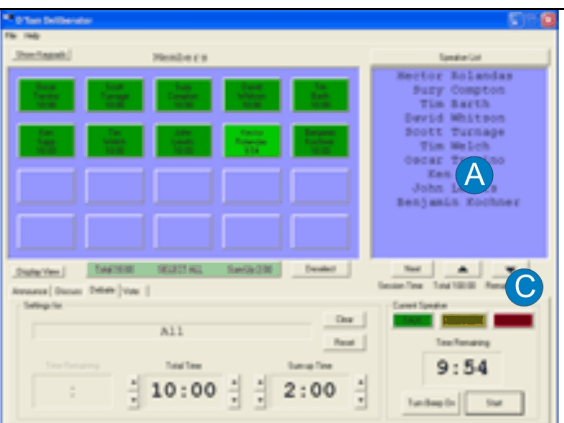

Uncheck "Auto-Navigate" if you wish to prevent The Deliberator from changing to the appropriate slide each time you change modes - Announce-Discuss-Debate-Vote. **Note:** Even though you may change modes, the data from each mode is flowing out so you could connect more than one PowerPoint presentation on different computers to display Voting, Announcements and Speaking Lists simultaneously.

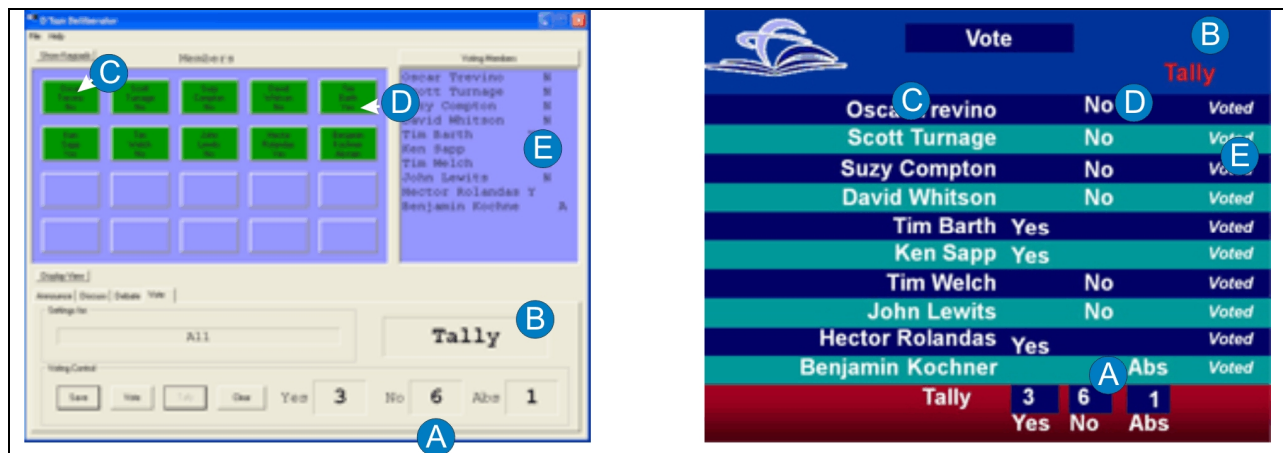
Uncheck "Live Votes" if you wish to hide votes cast until you click "Tally" on The Deliberator.



Explanation of Data Displayed

Most of the data items that can be displayed are also displayed on the Deliberator Control panel. Other data items are uniquely available on the PowerPoint presentation. In the Announce Mode, the contents of the data item "Title" is set by clicking the label above the Announcement preview box on The Deliberator. In the Discuss and Debate Modes, the names of the displayed speakers are not defined by their keypad IDs but by their position on the Speakers List as shown in the preview box.

Announce	
	
Discuss	
	
Debate	
	
Vote	



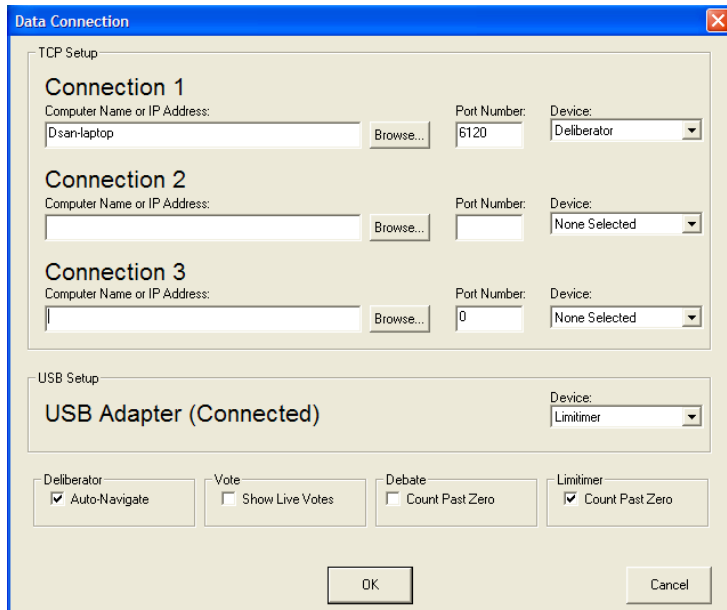
You may save this presentation anywhere on your computer. When the PowerPoint presentation is saved, simultaneously, the corresponding configuration file is also saved, or if you are saving to a new location, that file is re-created in the same place that you save the PowerPoint presentation.

Note: If you have finished formatting the presentation, we advise that you immediately set the configuration file attributes to "Read only."

Sample Presentation - Speaker Timer (Limitimer®)

Browse to the Limitimer subdirectory under Sample Presentations. Copy **both** the PowerPoint file (Limitimer-16x9.ppt) **together with the configuration file** (Limitimer-16x9.cfg) that has the same name. You may copy these files to any directory on your computer as long as they **stay together**.

Make the data connection



Most likely, you are connecting a Limitimer to your computer using the VC-2000 (Cat-5—USB) dongle. (See www.dsan.com/VideoClock). This sample presentation has been so configured.

If you are trying this software as a downloaded demo version, you probably do not yet have the dongle. If your computer is connected to the Internet, you can connect to a Limitimer data stream by entering IP address: 47.23.6.155 Port No. 64444. A simple 8-second repeating count-down program will be displayed along with Green-Yellow-Red light

changes.

Open the PowerPoint presentation that you have copied. To confirm the connection, from the PowerPoint menu, select [Add-In] | DSan | Data Connection. If your USB dongle is connected, and Limitimer is turned on, you should see the connection status under USB Adapter "(Connected)". Be sure that you have selected device "Limitimer."

See chapter Data Connection for other ways to connect to Limitimer data.

Start Limitimer

You should see the Time Remaining count down and the Phase Lights become active. If not, click on the PowerPoint screen. Note: Data is seen in both the Show and Edit modes.

There are 7 slides and a slide index in this presentation. Each demonstrates a different way to use the data coming from Limitimer. A corresponding configuration file will be created with the same name as the PowerPoint file. You can leave the presentation where it is or store a **copy** in the My Documents directory of your computer. You may also consider saving the files in the Shared Documents folder so that a non-administrative user can access them. Remember to copy and paste **both** the PowerPoint presentation **and** the corresponding configuration file. Once you have finished customizing the slide, you may wish to change the properties of both the PowerPoint and Configuration files to "Read Only".

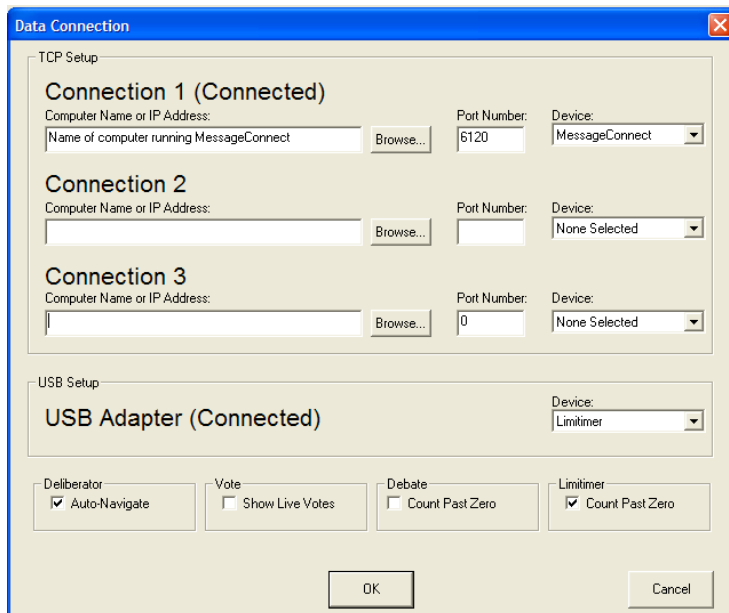


Although you may copy this slide into another PowerPoint presentation, the objects' DataConnect properties will **not** be imported. **You must reconfigure them.** Alternatively, you can incorporate slides from another presentation into the Limitimer.ppt file and the data connections will be available.

Sample Presentation - Speaker Timer (Limitimer) + MessageConnect

Note: To use this presentation, you must have installed the MessageConnect application that is included with the installation files. Browse to the Limitimer subdirectory under Sample Presentations. Copy **both** the PowerPoint file (Limitimer+Message.ppt) **together with the configuration file** (Limitimer+Message.cfg) that has the same name. You may copy these files to any directory on your computer as long as they **stay together**. Let's copy them to the main DataConnect directory.

Confirm data connection



Follow the data connection directions for Limitimer as above. Add an additional connection for Message Connect.

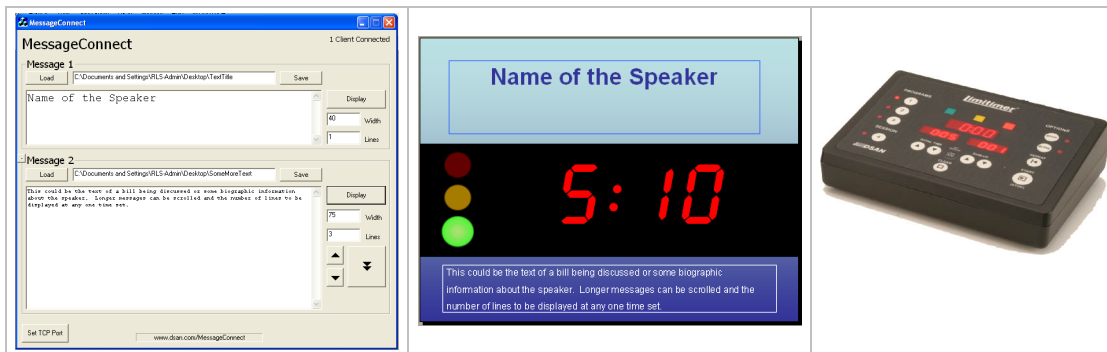
Open the PowerPoint presentation that you have copied into the main DataConnect directory. This presentation has been configured to work with a Limitimer connected via USB and display a text stream sent by the MessageConnect application running on the same computer on which the PowerPoint program is running. To confirm the connection, from the PowerPoint menu, select [Add-In] | DSan | Data Connection. Type the name of your computer as

well as a port number you have chosen in the MessageConnect application and select device Message Connect. (See below)

.

Start MessageConnect

Type a message into either text box in the Message Connect window. Configure the port number at the bottom of the dialogue box and click Display. When you have established a connected between the PowerPoint slide and MessageConnect, you should see the message "1 Client Connected" in the upper right-hand corner of the MessageConnect window.



Although you may copy these slides into another PowerPoint presentation, the objects' DataConnect properties will **not** be imported. **You must reconfigure them.** Alternatively, you can incorporate slides from another presentation into the Limitimer.ppt file and the data connections will be available.

Sample Presentation - Cue Lights (PerfectCue®)

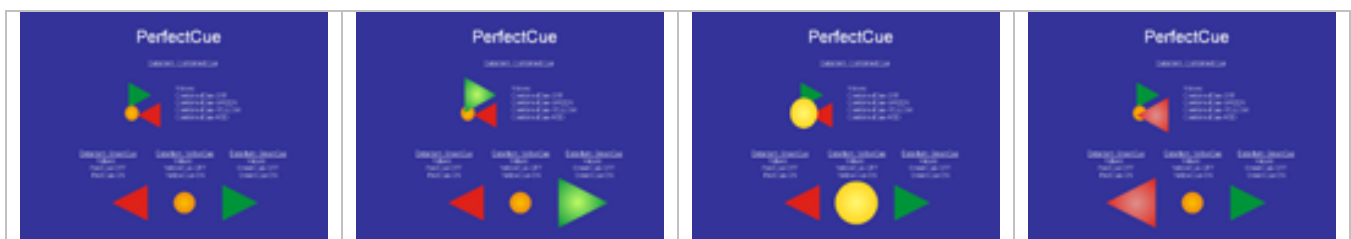
Browse to the PerfectCue subdirectory under Sample Presentations. Copy **both** the PowerPoint file (PerfectCue.ppt) **together with** the configuration file (PerfectCue.cfg) that has the same name. You may copy these files to any directory on your computer as long as they stay together. Let's copy them to the main DataConnect directory

Confirm the data connection

In the PerfectCue illustration, most likely, you are connecting a PerfectCue to your computer using the VC-2000 (Cat-5—USB) dongle. (See www.dsan.com/VideoClock). Open the PowerPoint presentation that you have copied into the main DataConnect directory. This presentation has been configured to work with a PerfectCue connected via USB. To confirm the connection, from the PowerPoint menu, select DSAN | Data Connection. If your USB dongle is connected, you should see the connection status under USB Adapter.

Start PerfectCue

The PowerPoint slide shows how you can use images to show either an ON and OFF state for each color cue or any of the four states for the combined cue.



The top image displays data item: Combined Cue . This data item can have four values: Idle, Green, Yellow and Red.

The bottom image is actually three separate images. Each displays a separate data item: Red Cue, Yellow Cue and Green Cue. Each one of these data items can have two values: OFF and ON.

See chapter **Summary of Data Items** to have a better understanding of the cue light data.

Sample Presentation - MessageConnect

Browse to the MessageConnect subdirectory under Sample Presentations. Copy **both** the PowerPoint file (MessageConnect.ppt) **together with** the configuration file (MessageConnect.cfg) that has the same name. You may copy these files to any directory on your computer as long as they stay together. Let's copy them to the main DataConnect directory

Launch MessageConnect. The sample file uses TCP Port 6120.

Launch the MessageConnect PowerPoint file.

Confirm the data connection

Select the Connection Number that already lists DataConnect as the "Device" and browse for your computer or the computer that is running MessageConnect.

Click OK. If you do not see the content of Message 1 or Message 2, make sure the port on DataConnect and MessageConnect match.

