

The Deliberator™ Electronic Meeting Manager



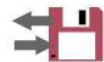
For city councils, community boards, planning commissions or corporate forums engaged in vigorous debate or public hearings.



Members self-regulate speaking order and control discussion times in an open and fair manner.



Communications and display keypads connect to a PC or laptop computer*.



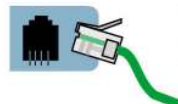
Data is saved to files corresponding to discussion sessions that may be resumed precisely.



Software registers requests-to-speak, keeps time for every speaker and tallies keypad votes.



Hybrid parallel/serial wiring configurations accommodate different seating arrangements and different size legislatures (up to 25 members).



Safe, low-voltage connections between the keypads and computer are achieved with telephone-type wire using modular connectors (easy set-up; no hard wiring).

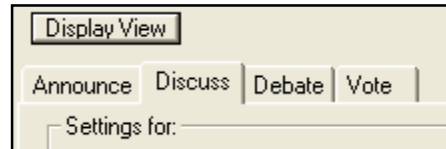
*Customer supplies computer. Software requires < 50Kbytes of storage and is compatible with Windows 98 / 2000 / XP.

D'San Corporation is pleased to offer a free, 60-day no-obligation trial use of The Deliberator. Please write or call us.

I. Operating Modes

The Deliberator has four selectable operating modes.

- **Announce** enables you to display text messages
- **Discuss** enables you to conduct un-timed discussions
- **Debate** enable you to conduct timed discussions
- **Vote** enables you to register and record keypad inputs



II. Keypad displays position in the cue to the speaker

The Deliberator is designed to work with keypads that sit in front of each Council member. The Keypads contain a “Request to Speak” keypad button. When a member pushes the Request-to-Speak keypad button, a green light goes on at the keypad indicating that he/she is on the speakers list. The position on the speakers list (i.e. 1, 2, 3...) is shown on the digital keypad display. This display also shows Time Remaining when The Deliberator is in the Debate mode.



III. Keypad Options

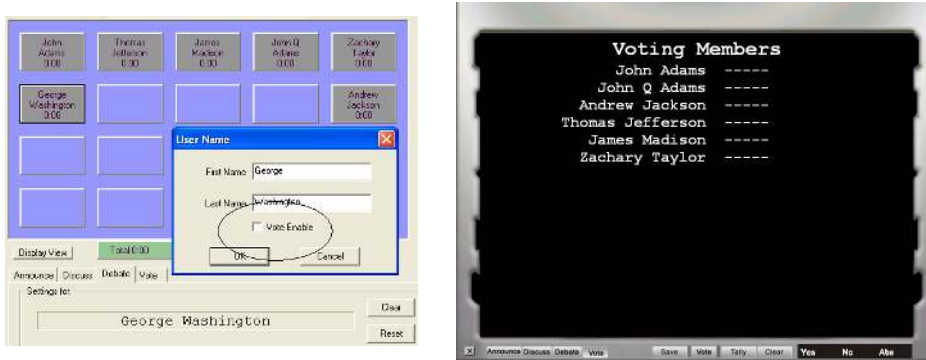
For some legislatures, the standard Deliberator keypads (4.5" x 7.5" x 1.75") are too large and too feature rich. DSan produces the following keypad options.



These are flush-mount keypads. Also supplied in stand-alone cases at additional charge. See <http://www.dsan.com/Deliberator/Keypads.pdf> for drawings of keypads at actual size

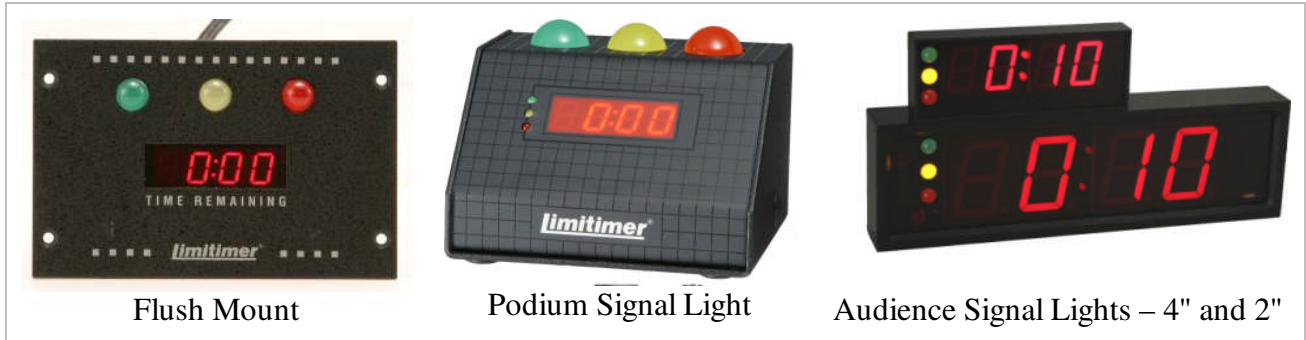
IV. Enable / Disable Voting Privileges

In order to accommodate legislatures where all members can participate in discussions but only some can vote, The Deliberator has a "Vote Enable" option to the User Name dialogue box. If the Vote Enable checkbox is left unchecked, that member's name will not appear on the voting screen and his keypad vote buttons will be inactive during voting.



V. Compatibility with Limitimer Signal Lights

The Deliberator can drive Limitimer® signal lights. These signal lights may be useful when using The Deliberator to time members of the public who are speaking to a legislature.



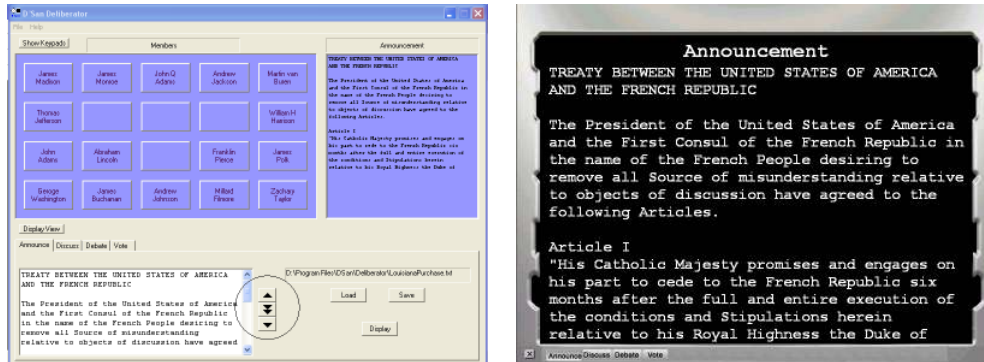
Flush Mount

Podium Signal Light

Audience Signal Lights – 4" and 2"

VI. Scrolling Display of Text Messages

Long text messages such as meeting agendas, the text of proposed legislation, activities, etc. can be displayed in an auto scroll format.



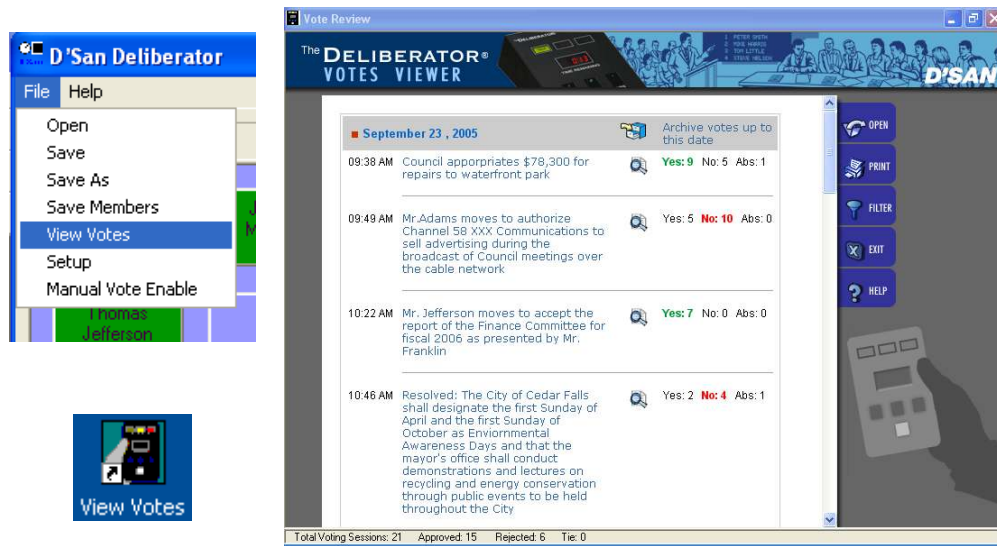
VI. Keyboard Shortcuts

When the meeting chairman or moderator is controlling the Deliberator software, he or she need not use the mouse to perform commands such as starting and stopping the clock and advancing to the next speaker on the list. The following commands can be invoked by keystrokes:

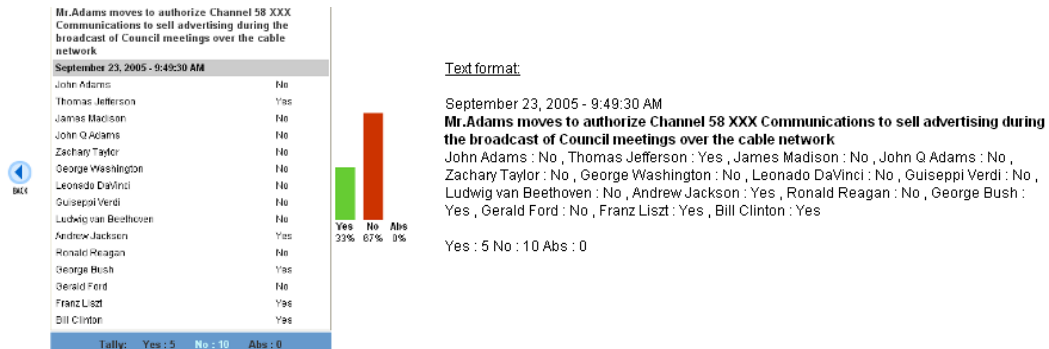
Command	Keystroke
Next Speaker	N or Space Bar
Start / Stop	S
Beep on.off	B
Debate Mode	D
Vote Mode	V
Vote	V
Tally	T
Clear	C
Save	S

VII. Vote Viewer Application

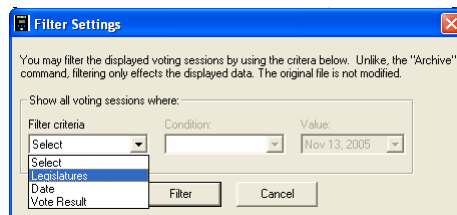
The Deliberator ships with an application that displays all saved votes by date. The application is launched from The Deliberator or from a desktop icon and can run simultaneous with The Deliberator.



Results can be displayed for a single vote in either tabular or text format and the information may be copied and pasted into any word processing document such as meeting minutes.



Votes files can be filtered to display votes for a single legislature (when more than one legislature is using The Deliberator) or for measures that were adopted or rejected. The files may be archived, for example for each year, to make it easier to view groups of votes.



A demo votes file has been installed in the votes directory. The first time you launch this application, you are prompted to browse for a votes file. Select the sample file to see how votes are displayed. Votes from your legislature are saved to a Votes.txt file.

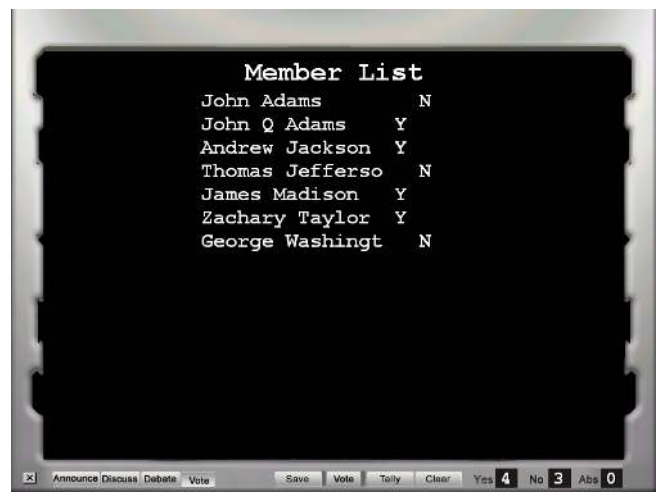
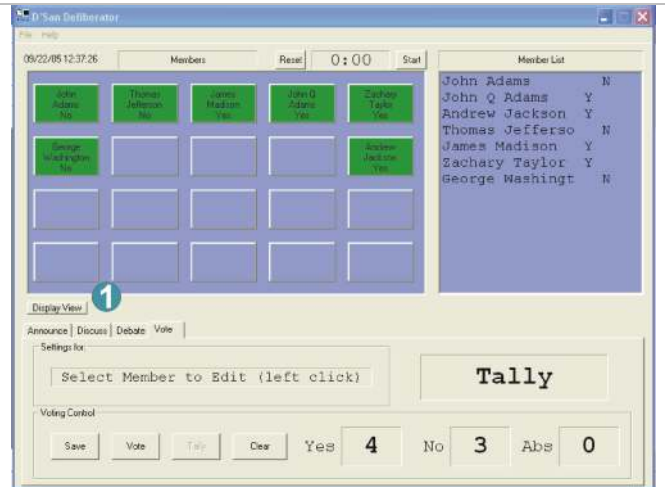
VIII. Voting or Organizing Speaking Order – Some Display Options

City council meetings are sometimes broadcast over a cable TV channel or streamed over the Internet. Some customers have already devised ways of displaying the voting results or speakers list. Here are some ways it can be done.

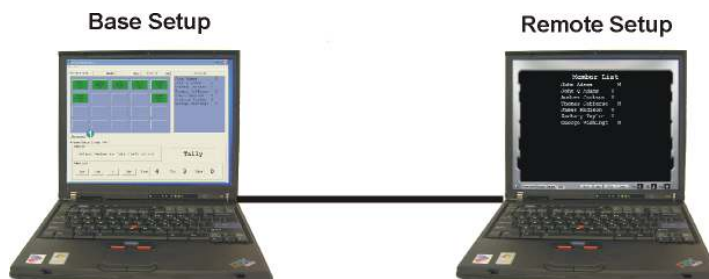
When the clerk clicks the Display View button (1), a clean, full-screen image appears.

If the Deliberator application is running on a desktop computer, it is possible to install a second video card (about \$150) to provide two different outputs. One output would display the control view (top) and the second output would display the full-screen view (bottom). This second output, may be displayed on a large flat screen LCD monitor or it can be projected.

This second output can be converted to a TV signal by any number of consumer-friendly devices costing between \$100 to \$200. The TV signal can be fed into a broadcast transmission.



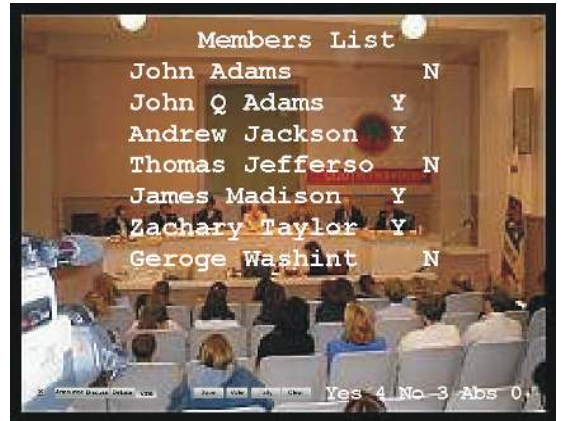
If the Deliberator is operated on a Laptop computer, it would not be possible to install a second video card. In this case, a second computer (possibly located in the broadcast studio) can be loaded with Deliberator software and designated as a "Remote" client in the setup menu. The two computers can be connected over a wireless network or via an in-house LAN. The output of this second computer can be converted to an NTSC signal as above and added to the broadcast feed.



The black background with the silver border that is shown in the bottom screen shot on the previous page is a bitmap file that is supplied with the Deliberator setup program. This file can be replaced with one created by the user. The bitmap can contain the logo of the city council or any other design that you create.

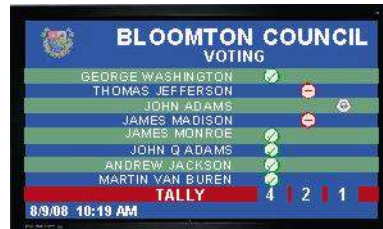
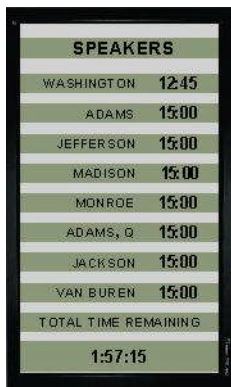
It is also possible to use a blank bitmap file filled with a single color as shown at the right. If the resulting computer output is converted to a TV signal, this background color can be set to be "transparent." When this video output is combined with an image of the city council received from a TV camera, the speakers list or voting results will appear as white letters over that TV image. The combined image will resemble the scores overlaid on a football game broadcast.

No formatting is possible. The Deliberator uses Courier font because it is always supplied with Windows computers.



IX. PowerPoint© Inegration

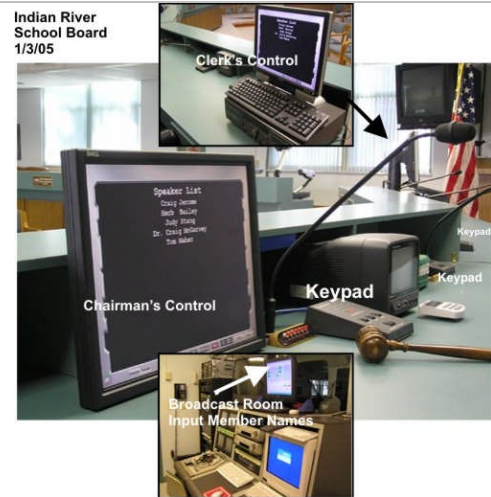
DSan offers an Add-In for Microsoft's PowerPoint that allows any computer to display votes, timings or speaker lists from The Deliberator in a PowerPoint slide. The computer may be the same computer that is running the Deliberator or any computer networked to the computer running The Deliberator. The use of PowerPoint allows you to maximize the sreen layout for the number of members in your legislature. You can also customize screens to be horizontal or vertical and design them to contain your council's logo, colors and fonts.



X. Installations



Voting screen projected for visitors to the City Council of Mansfield, TX.



Vero Beach, Fl. Speaker's List displayed in front of School Board chairman; TV control room receives info via Wi-Fi.