

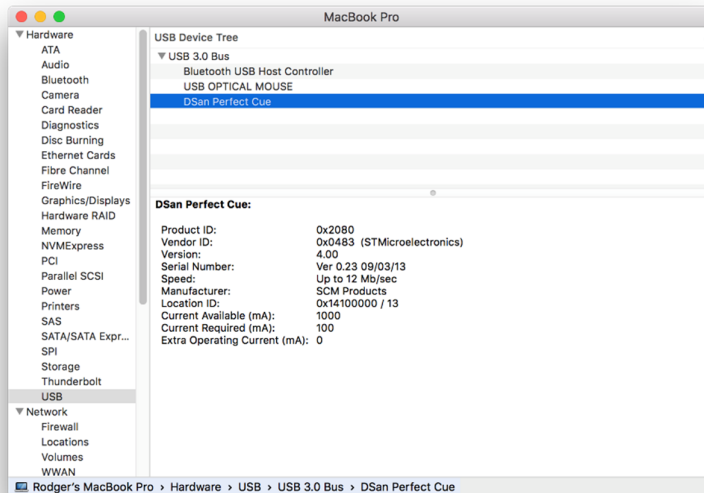


Using PerfectCue® on a MAC

To verify that PerfectCue is recognized by your MAC computer...

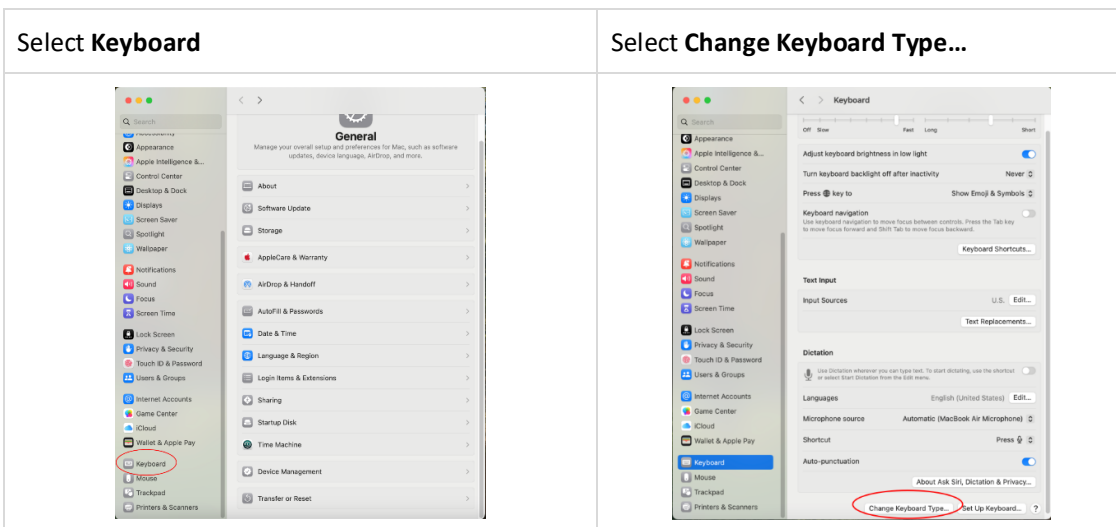
Click Apple icon + Option key. Click "Information"

Under Hardware, Click USB

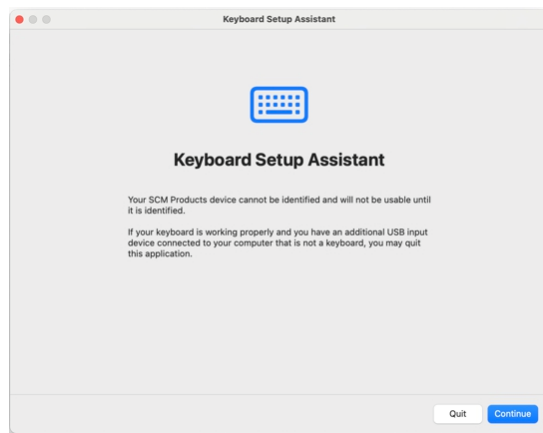


If you don't see DSan Perfect Cue or if it doesn't change slides on your presentation application, make sure that it is recognized as an ANSI USB keyboard.

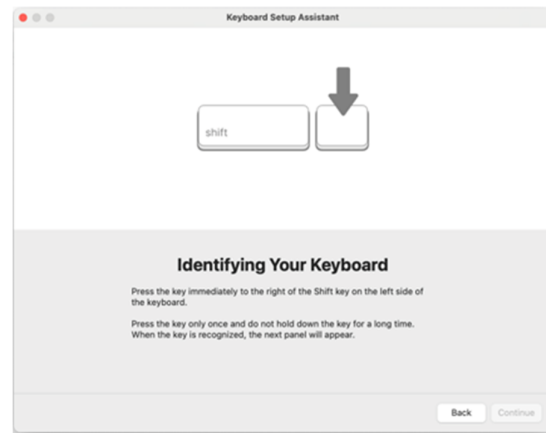
Click Apple icon + Option. Select **System Information**.



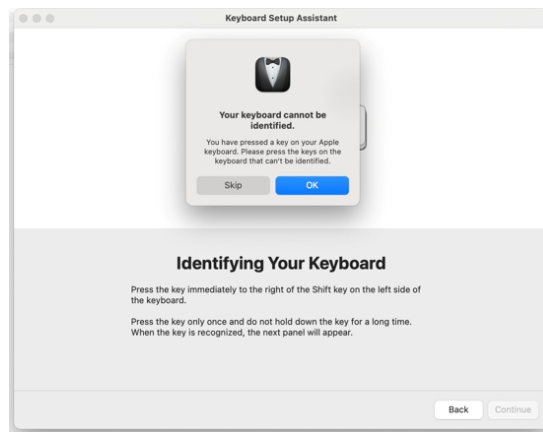
Click: **Continue**



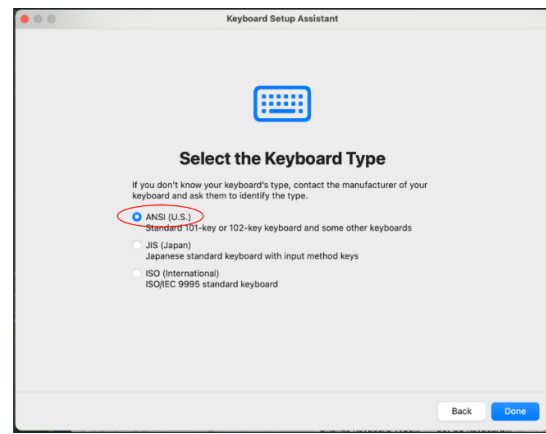
Click: **Return** on integrated keyboard



Select: **Skip**



Select **"ANSI"** Select **"Done"**



PerfectCue is a standard Human Interface Device (HID of type USB keyboard).

Default keystrokes:

Forward = Right Arrow USB Keycode = 0x4f

Back = Left Arrow USB Keycode = 0x50

Blank = "b" USB Keycode = 0x05

These may be changed using the configuration application (for Windows®)

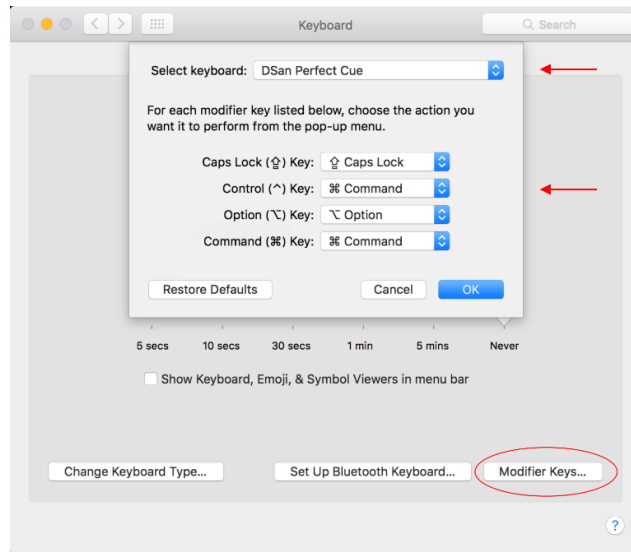
<https://www.dsan.com/perfectcue>



How to work with applications where navigation keystrokes use the Apple Command key

Since PerfectCue configuration software is only available on Windows machines, you cannot directly configure the Command keystroke. You must re-map the DSAN PerfectCue keyboard on the MAC so that the Ctrl keystroke triggers the Command key.

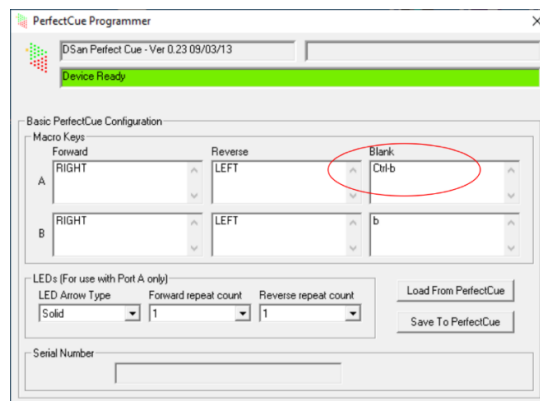
Apple Icon | System Preferences | Keyboard | Modifier Keys...



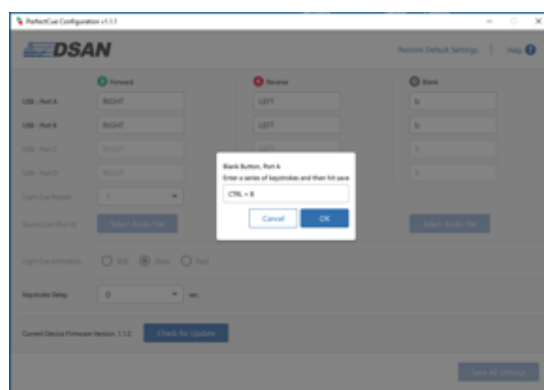
Be sure to select keyboard: DSAN PerfectCue

Now, reprogram the desired button with the correct keystroke for the MAC software application

Programmer for PerfectCue, PC-Mini and PC-Micro V 1.0:



Programmer for PC-Micro V 2.0:



When the user presses the Blank button on the transmitter, and Port A is connected to the MAC, the application will receive "[Command] b".

PerfectCue configuration application: <https://www.dsan.com/perfectcue>